

COMMUNITYLINK NEWSLETTER

21 SE SECOND STREET—CHATFIELD, MN 55923

507-867-3810

WWW.CI.CHATFIELD.MN.US

Inside this issue:

Enterprise Drive Construction Rebates	1
Fire Prevention Week	1
Elected Officials	1
Upcoming Events	2

Elected Officials

MAYOR

John McBroom (507) 867-1500
mayormcbroom@ci.chatfield.mn.us

COUNCIL MEMBERS

Paul Novotny (507) 867-1535
councilornovotny@ci.chatfield.mn.us

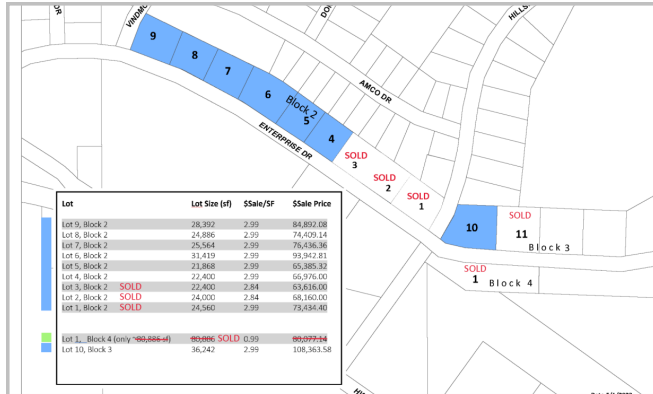
Mike Urban (507) 867-1536
councilorurban@ci.chatfield.mn.us

Pam Bluhm (507) 867-1532
councilorbluhm@ci.chatfield.mn.us

Josh Broadwater (507) 867-1533
councilorbroadwater@ci.chatfield.mn.us

Dave Frank (507) 867-1534
councilorfrank@ci.chatfield.mn.us

Enterprise Drive Construction Incentive Program



Commercial lots are available for sale and ready for development on Enterprise Drive. These properties are perfect for uses such as construction / trade shops, warehousing, light manufacturing, as well as some commercial opportunities. Utilities are stubbed into the lots and some lots may be combined to fit your needs. Up to \$40,000 in rebates are available for qualified construction projects on the city owned lots along Enterprise Drive. Contact Chatfield EDA for details by email at cgiesen@ci.chatfield.mn.us or by phone 867-3810.

Fire Prevention Week is October 8-14, 2023!

Cooking safety starts with YOU.

Pay attention to fire prevention.™



NFPA FIRE PREVENTION WEEK
fpw.org

©2023 National Fire Protection Association | Sparky is a trademark of NFPA

OPEN HOUSE |
CHATFIELD FIRE HALL
THURSDAY, OCTOBER 12TH
5:00—7:00 PM

Join in the fun for an evening of kid and family friendly activities. Kids will be able to use a fire hose, navigate through a smoke house, and see a car extrication demonstration.

PUBLIC WORKS—FALL BRUSH & LEAF DUMP

EFFECTIVE 10/02/2023

- **Brush, Leaves and Grass Clippings Only, Please.**
 - *Leaves & Grass Clippings Pile is the lower pile on the right side*
 - *Trees and Brush Pile is the pile located higher up on the right side*
- West on County Rd. 2 at the lights. Take the first gravel road (Mind Drive) on the right after the Root River Bridge. You will find a gate to the dump on the right side of the road.
- Wednesday 1-4 PM, Friday 1-4 PM & Saturday 10 AM—4 PM

For safety purposes, hunting is not allowed on the brush & leaf dump property. The brush & leaf dump will close after the first snowfall.

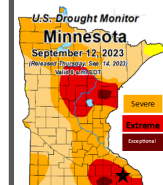
SIGN UP FOR CITIZEN ALERT NOTIFICATIONS AT WWW.CI.CHATFIELD.MN.US



CITY OF CHATFIELD | 21 SECOND STREET SE | CHATFIELD MN 55923
507-867-3810 | WWW.CI.CHATFIELD.MN.US

EXTREME DROUGHT — PLEASE RESTRICT WATER USE

CHATFIELD NEEDS TO REDUCE DAILY USAGE BY 43,000 GALLONS TO CONTRIBUTE TO THE WATERSHED GOAL



Prolonged dry weather has resulted in expansion of extreme drought in the watershed. Fillmore & Olmsted Counties are a part of. The watershed has moved to the **Drought Restrictive Response Phase** of the Minnesota Statewide Drought Plan.

Please conserve as much water as possible.

Significant demand reduction can be achieved by restricting non-essential outdoor water use, especially lawn irrigation, building power washing, car washing and filling of swimming pools.

Please Note: If drought conditions worsen, the next phase of the plan requires mandated restrictions.

EXTREME DROUGHT FOR UPPER MISSISSIPPI-BLACK-ROOT WATERSHED
CITY OF CHATFIELD | 21 SECOND STREET SE | CHATFIELD MN 55923
507-867-3810 | WWW.CI.CHATFIELD.MN.US

City of Chatfield

21 Southeast Second Street
Chatfield, MN 55923
Phone: 507-867-3810
Fax: 507-867-9093
www.ci.chatfield.mn.us

In Case of Emergency: 9-1-1

Ambulance Office (Non Emergency) 507-867-4446
Police Office (Non Emergency) 507-867-3331
Chatfield Public Library 507-867-3480







UPCOMING EVENTS

CITY CALENDAR

OCTOBER 2023

Event details at www.ci.chatfield.mn.us

SUNDAY	MONDAY	TUESDAY	WEDNESDAY	THURSDAY	FRIDAY	SATURDAY
1	2 7:00 PM Planning & Zoning Commission Meeting	3 Recycling Collection 10:30 AM Storytime - Chatfield Public Library	4 Fillmore County Residents Garbage Collection	5 Olmsted County Residents Garbage Collection 5:00 PM Heritage Preservation Commission Meeting 7:00 PM Library Board-CANCELLED	6	7 
8 10:00 AM Broadway Bus: Girl From The North Country 	9 4:30 PM Personnel Budget Committee Meeting 5:30 PM Public Works Committee Meeting 7:00 PM City Council Meeting	10 Recycling Collection	11 Fillmore County Residents Garbage Collection 6:30 PM Cable Access Board Meeting	12 Olmsted County Residents Garbage Collection 5:00 PM Fire Prevention Week Open House	13	14 7:30 PM 
	16	17 Recycling Collection 10:30 AM Storytime - Chatfield Public Library	18 Fillmore County Residents Garbage Collection	19 Olmsted County Residents Garbage Collection 7:30 PM Paul Johnson with Kristin Johnson	20 Utility Bills Due	21 
22	23 4:30 PM Economic Development Authority Board Meeting 4:30 PM Public Services Committee Meeting 5:30 PM Committee of the Whole 7:00 PM City Council Meeting	24 Recycling Collection	25 Fillmore County Residents Garbage Collection	26 Olmsted County Residents Garbage Collection 6:00 PM Pumpkin Carving Workshop	27	
29	30 City Leaf Pick Up	31 City Leaf Pick Up Recycling Collection	1	2	3	4

Find calendar details at www.ci.chatfield.mn.us

CITY LEAF PICK UP

curbside leaf collection



Monday, 10/30 & Tuesday, 10/31

Place your bagged leaves at the curbside for pickup

LEAVES & GRASS CLIPPINGS ONLY

FALL 2023



CITY OF CHATFIELD | 21 SECOND STREET SE | CHATFIELD MN 55923
507-867-3810 | WWW.CI.CHATFIELD.MN.US

Chatfield Public Library



Hours
 Tue. 10:00am 6:30pm
 Wed. 10:00am 6:30pm
 Thur. 10:00am 8:30pm
 Fri. 9:00am 5:00pm
 Sat. 9:00am 2:00pm

Storytime every 1st and 3rd Tuesday at 10:30am

Family Pumpkin Carving Workshop Oct. 26th, 6:00pm